

Number of Baseplates = 1 pieces
Number of Pixelsquares = 10 pieces
Number of Colors = 9 pieces

100 = 1

288 = 2

294 = 1

306 = 1

343 = 1

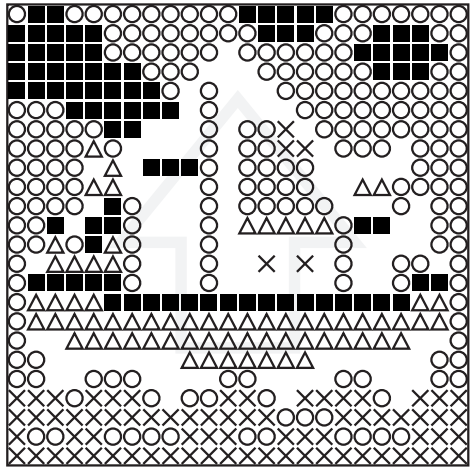
376 = 1

389 = 1

391 = 1

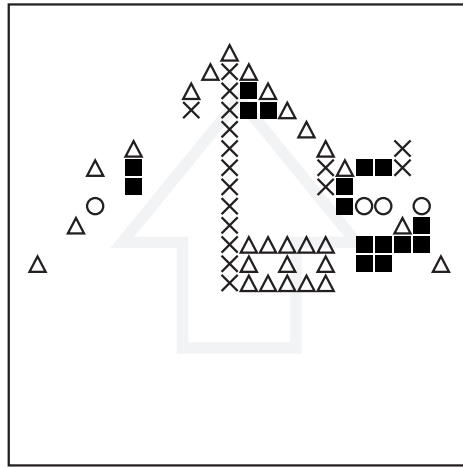
441 = 1

1



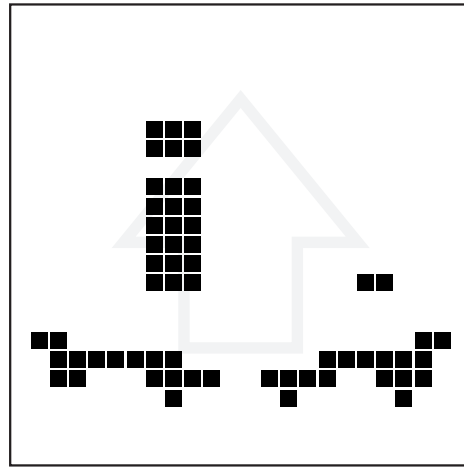
■ = (100) ○ = (288) × = (294)
△ = (306)

1



■ = (343) ○ = (376) × = (389)
△ = (391)

1



■ = (441)