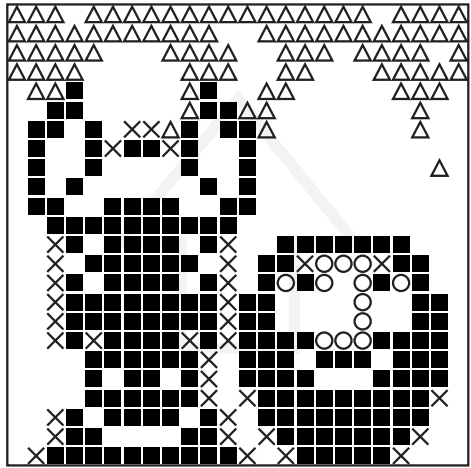


Number of Baseplates = 1 pieces
Number of Pixelsquares = 10 pieces
Number of Colors = 9 pieces

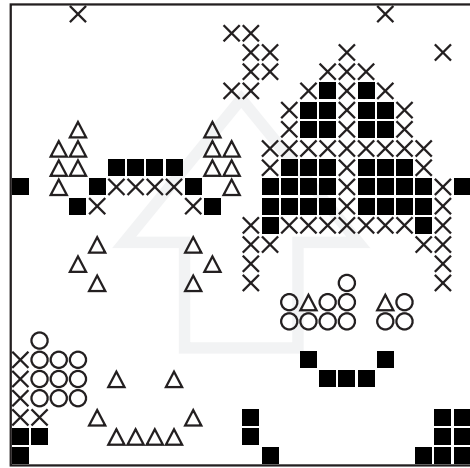
100 = 2
274 = 1
277 = 1
294 = 1
306 = 1
376 = 1
391 = 1
441 = 1
505 = 1

1



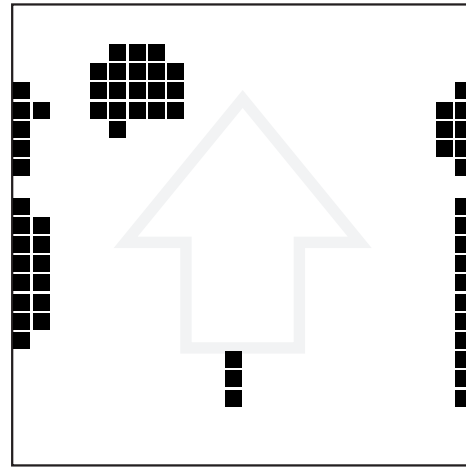
■ = (100) ○ = (274) × = (277)
△ = (294)

1



■ = (306) ○ = (376) × = (391)
△ = (441)

1



■ = (505)