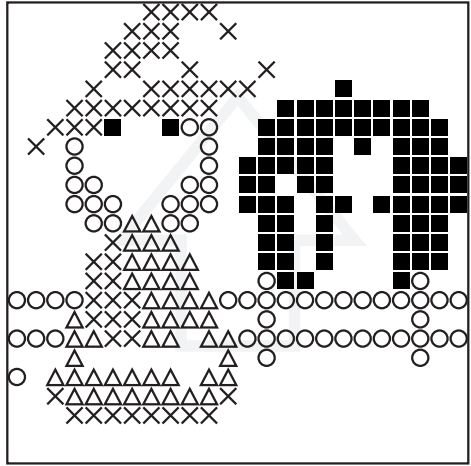


Number of Baseplates = 1 pieces  
Number of Pixelsquares = 11 pieces  
Number of Colors = 10 pieces

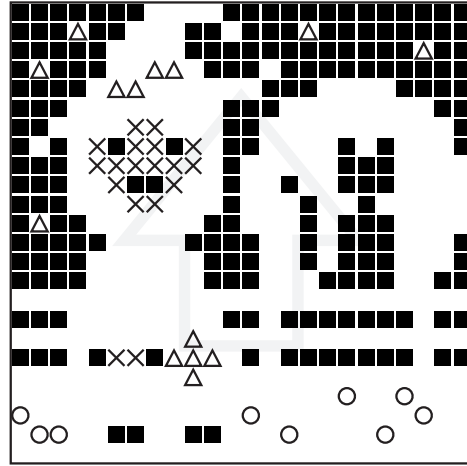
100 = 1  
130 = 1  
198 = 1  
294 = 1  
309 = 2  
342 = 1  
376 = 1  
392 = 1  
505 = 1  
552 = 1

1



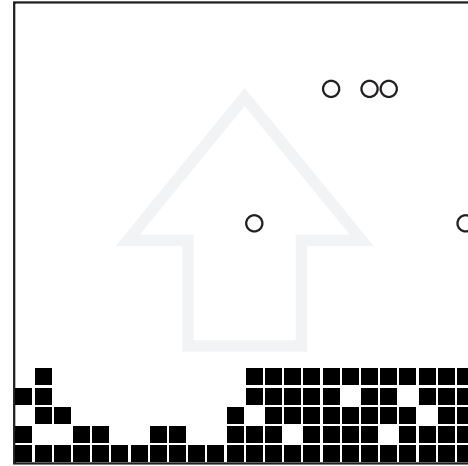
■ = (100)   ○ = (130)   × = (198)  
△ = (294)

1



■ = (309)   ○ = (342)   × = (376)  
△ = (392)

1



■ = (505)   ○ = (552)