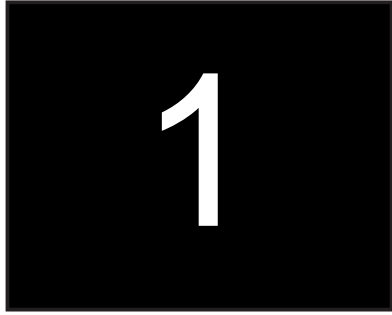


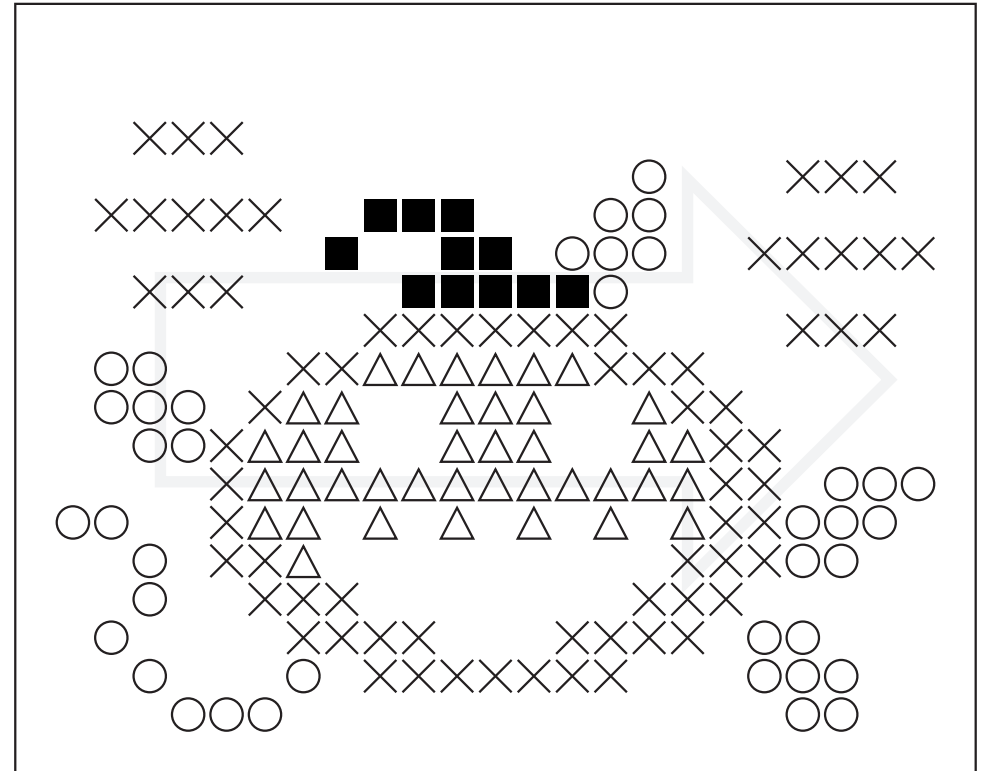
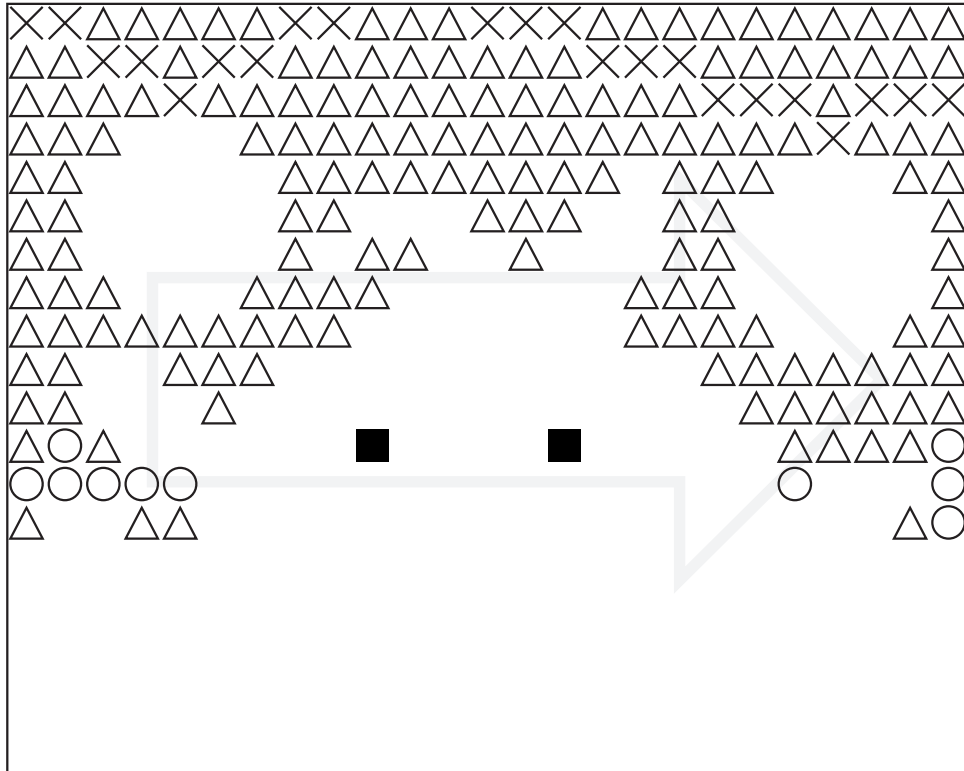
Number of Baseplates = 1 pieces
Number of Pixelsquares = 15 pieces
Number of Colors = 11 pieces

100 = 1
130 = 1
294 = 1
309 = 3
342 = 1
343 = 1
389 = 2
391 = 1
392 = 1
441 = 1
505 = 2

- = (100)
- = (130)
- × = (294)
- △ = (309)



- = (342)
- = (343)
- × = (389)
- △ = (391)



- = 392
- = 441
- × = 505

