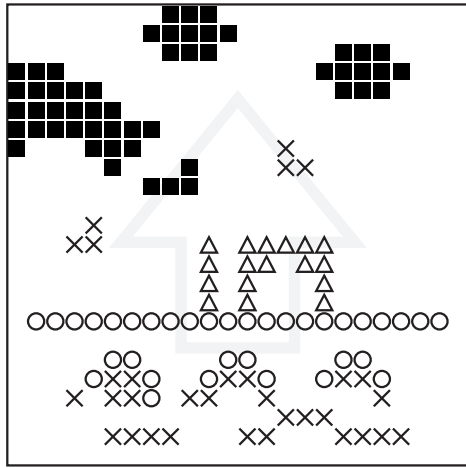


Number of Baseplates = 1 pieces
Number of Pixelsquares = 12 pieces
Number of Colors = 11 pieces

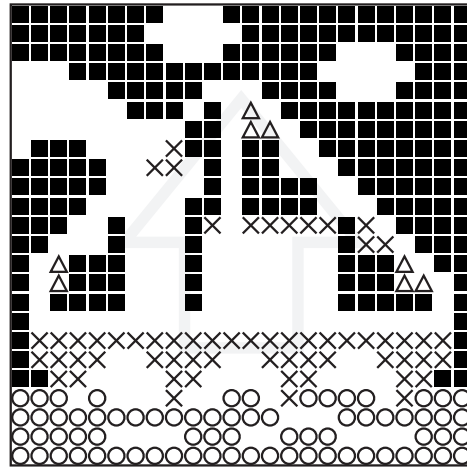
100 = 1
172 = 1
198 = 1
271 = 1
288 = 2
294 = 1
306 = 1
343 = 1
353 = 1
392 = 1
441 = 1

1



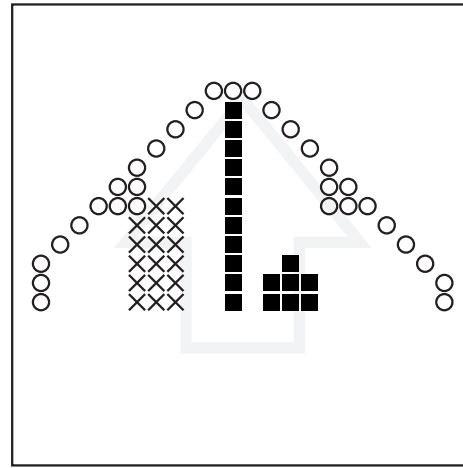
■ = (100) ○ = (172) × = (198)
△ = (271)

1



■ = (288) ○ = (294) × = (306)
△ = (343)

1



■ = (353) ○ = (392) × = (441)